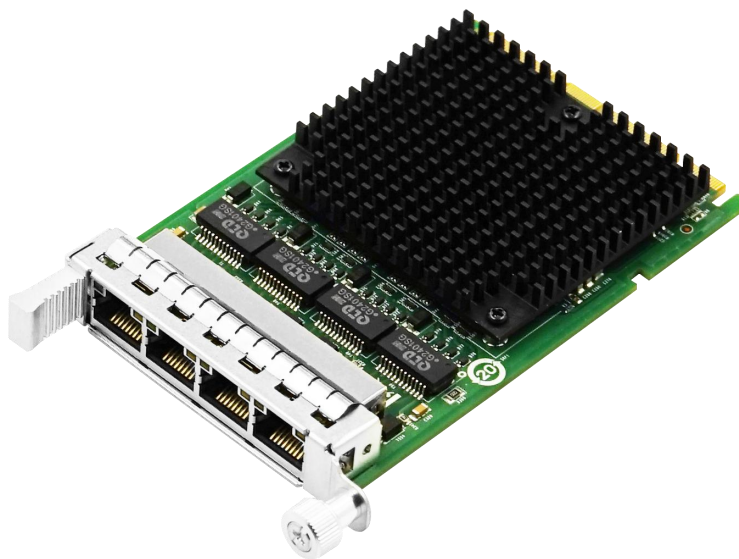


LRES3023PT-OCP

—OCP3.0 Quad-port Gigabit Copper Ethernet Network Adapter (Intel I350)

Overview



LRES3023PT-OCP is an OCP3.0SFF four-port copper Gigabit Ethernet configurator independently developed by Shenzhen Lianrui Electronics Co., Ltd. based on the Intel I350 host solution. This suitable configurator is mainly designed for use in servers and their application equipment. LRES3023PT-OCP can simultaneously collect and aggregate actual errors and registrations into groups through multiple ports to expand network bandwidth and protect network performance. It is capable of real-time automatic detection and monitoring. Realistically routes the communication line from the failed port to other members of the same group to continue operation for uninterrupted high-performance communication.

LRES3023PT-OCP adopts the SFF standard structure of OCP3.0, which is developed on the Ethernet MAC+PHY (media interface controller and physical interface receiver) controller based on Intel Gigabit rate, and supports new current and subsequent A long time server needs while also adapting to the current network. It supports NCSI function and scan chain function, and is equipped with excellent ESD anti-static protection capability.

Key Features

1. An Intel I350 solution OCP3.0 SFF structure of the quad-port Copper Gigabit Ethernet network adapter
2. With a rate of 1G
3. It can enhance DPDK to be more efficient and flexible in packet forwarding and packet processing.

Specifications

Controller	Intel I350
Cable medium	Copper
Fiber Type	1000Base-T Cat6 : up to 100m
Bracket Height	SFF
Power (min)	2.316W
Power (max)	4.248W
System Support	Windows7 /8 /8.1 /10 /11
	Windows Server 2008 R2 /2012 R2 /2016 R2
	Windows Server 2019 R2 /2022 R2
	RHEL/Centos 7.3 /7.6 /7.9 /8.2 /8.3
	Deepin 15.11
	Deepin 20 /20.6
	Ubuntu 18.04.5 /16.04.3 /20.04.3
	SUSE 12.5
	FreeBSD 12.2
	ZTE New Fulcrum 3.2.2 /5.0.5
	Asianux Server v7.0
	Galaxy Unicorn v10 SP1
	NeoKylin 7.6
	Zhongke Fangde desktop operating system 4.0
	Zhongke Fangde server operating system
	Tongxin UOS 20
	Emind OS
	VMware ESXi 6.5 /6.7 /7.0
	Mikrotik
	iKuai router

	OpenKylin
Bus Type	OCP3.0 SFF
Data rate per port	1Gbps
Connector	4*1G SFP
Power Supply	OCP

Technical Features

Protocol Support	IEEE 802.3ab 1000BASE-T Ethernet IEEE 802.3az - Energy Efficient Ethernet (EEE) IEEE 802.3z IEEE 802.1Q VLANs IEEE 802.3x IEEE 1588
PXE	Yes (Firmware: 95256-005BB208H.eep)
UEFI	Yes (Firmware: 95256-005BB208H.eep)
DPDK	Yes
WoL	Yes
iSCSI	No
Jumbo Frames	Yes
FCoE	No
VMDq、SR-IOV	Yes
IPsec Offload	Yes
Jumbo DataFrame Max	9.2KB
NCSI	Yes
Scan Chain	Yes
Network Virtualization	VEB\VLAN\QinQ\VxLAN\NVRGE
ESD_Contact discharge	±8KV (Class A)
ESD_Air discharge	±5KV (Class C)

ESD test classification

Class A: Normal performance within the limits specified by the manufacturer, commissioner, or purchaser.

Class B: Temporary loss or reduction of function or performance, but can be recovered by itself after the disturbance stops, without operator intervention;

Class C: Temporary loss or degradation of function or performance that requires operator intervention to restore;

Class D: irrecoverable loss of function or performance degradation due to damage to device hardware or software, or loss of data.

Environment Features

Operating Temperature	0 °C to 55 °C (32 °F to 131 °F)
Storage Temperature	-40 °C to 70 °C (-40 °F to 158 °F)
Storage Humidity	Maximum: 90% non-condensing relative humidity at 35 °C
Certification	FCC, CE, RoHS

Physical Features

PCB Size(mm)	76*115*1.6
Package Size(mm)	179*150*30
Weight(g)	*

LED Indicators

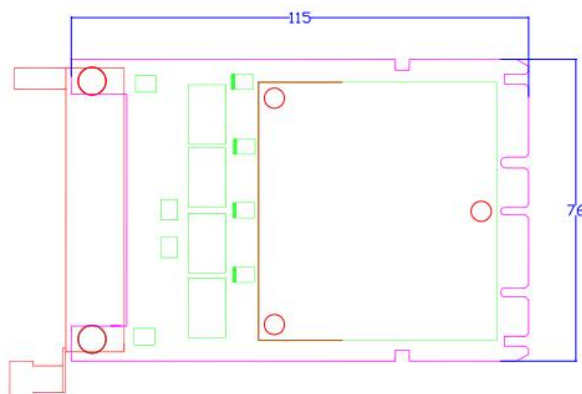
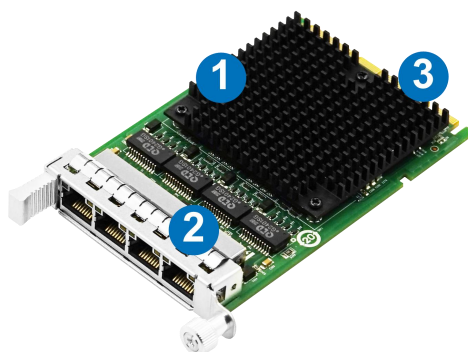
1Gbps	Connection Status	(ACT)Green Link + (LINK) Orange Link
	Transfer status	(ACT)Green Blink + (LINK) Orange Link
100Mbps	Connection Status	(ACT)Green Link
	Transfer status	(ACT)Green Blink

Order Information

P/N	Description
LRES3023PT-OCP	OCP3.0 Quad-port Gigabit Copper Ethernet Network Adapter (Intel I350)

PS: Above details are only for reference, if there is any change, no prior notice.

Product Structure



1. Heat sink
2. 4*1G RJ45 Connector
3. Golden finger interface

PS: The picture is for reference, and the actual product shall prevail.

Companion Products

Fiber NIC

- § LR-LINK PCI 100FX Desktop Adapter
- § LR-LINK PCIe 100FX Desktop Adapter
- § LR-LINK PCI 1000BASE-SX/LX Desktop Adapter
- § LR-LINK PCIe 1000BASE-SX/LX Desktop Adapter
- § LR-LINK PCIe 1000BASE-SX/LX Server Adapter
- § LR-LINK PCIe 10GBASE-SX/LX Server Adapter
- § LR-LINK PCIe 25GBASE-SX/LX Server Adapter
- § LR-LINK PCIe 40GBASE-SX/LX Server Adapter
- § LR-LINK PCIe 100GBASE-SX/LX Server Adapter

Copper NIC

- § LR-LINK PCI 10/100Mbps Desktop Adapter
- § LR-LINK PCIe 10/100Mbps Desktop Adapter
- § LR-LINK PCI 10/100/1000Mbps Desktop Adapter
- § LR-LINK PCIe 10/100/1000Mbps Desktop Adapter
- § LR-LINK PCIe 10/100/1000Mbps Server Adapter
- § LR-LINK PCIe 100/1G/10Gbps Server Adapter
- § LR-LINK PCIe 1G/2.5G/5G/10Gbps Server Adapter

Download Drivers

To get the drivers, please visit us at: <http://www.lr-link.com/support/driver.html>.

Product Quick Guide

To know the network card basic knowledge to choose the suitable NIC you need, please visit us at: <http://www.lr-link.com/productchoose.html>.

Customer Support

LR-LINK customer Support Services offers a broad selection of programs including phone support and warranty service. For more information, contact us at Service and availability.

<http://www.lr-link.com/contactus.html>

Shenzhen Lianrui Electronics Co.,LTD.

Shenzhen Lianrui Electronics Co.,Ltd is an efficient Ethernet adapter design company with independent research and development,using Intel,Net-swift,Tehuite,Broadcom,Realtek and other manufacturers Ethernet controller, developed by our company's independent R&D design team, manufacturedby our company workshop, and then sell.

Declaration

Our products specifications come from modifying the chip manufacturer's specifications released. Product features, technical parameters, technology right, intellectualproperty rights and brand names etc.mentioned in specifications are just referenced only.There is no infringement meaning.If there is any important andsensitive content related, please contact our Lianrui company, we'll delete them, Thank you.

SHENZHEN LIANRUI ELECTRONICS CON.,LTD.

ADD:9/10F 1B Block ECO Valley, Longgang Street, Longgang District Shenzhen China 518116 (Factory)

14F T10 Bldg., Sino-Ocean New World, Longcheng Street, Longgang District Shenzhen China 518172 (Office)

Tel:+86(0)755-33671531 33671533

Fax:+86(0)755-29082065

Product Sales service@lr-link.com

Technical Support support@lr-link.com

WEB www.lr-link.com

The logo for LR-LINK, featuring the letters 'LR-LINK' in a bold, blue, sans-serif font.

Copyright © Shenzhen Lianrui Electronics CO.,LTD,2006-2021. All rights